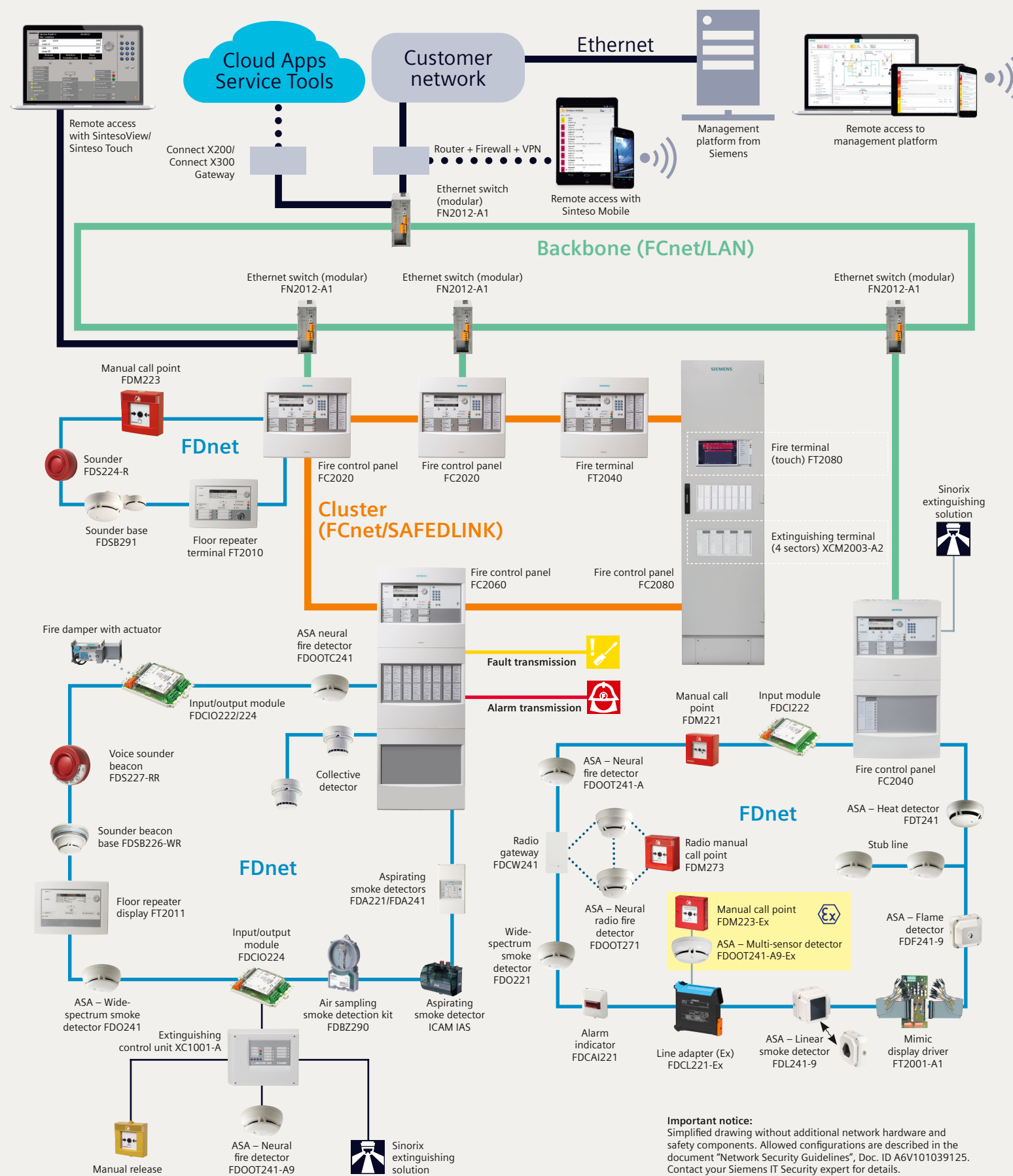




Sintesio FDnet devices

Planing Tool

Sintesio – Because smarter protection matters



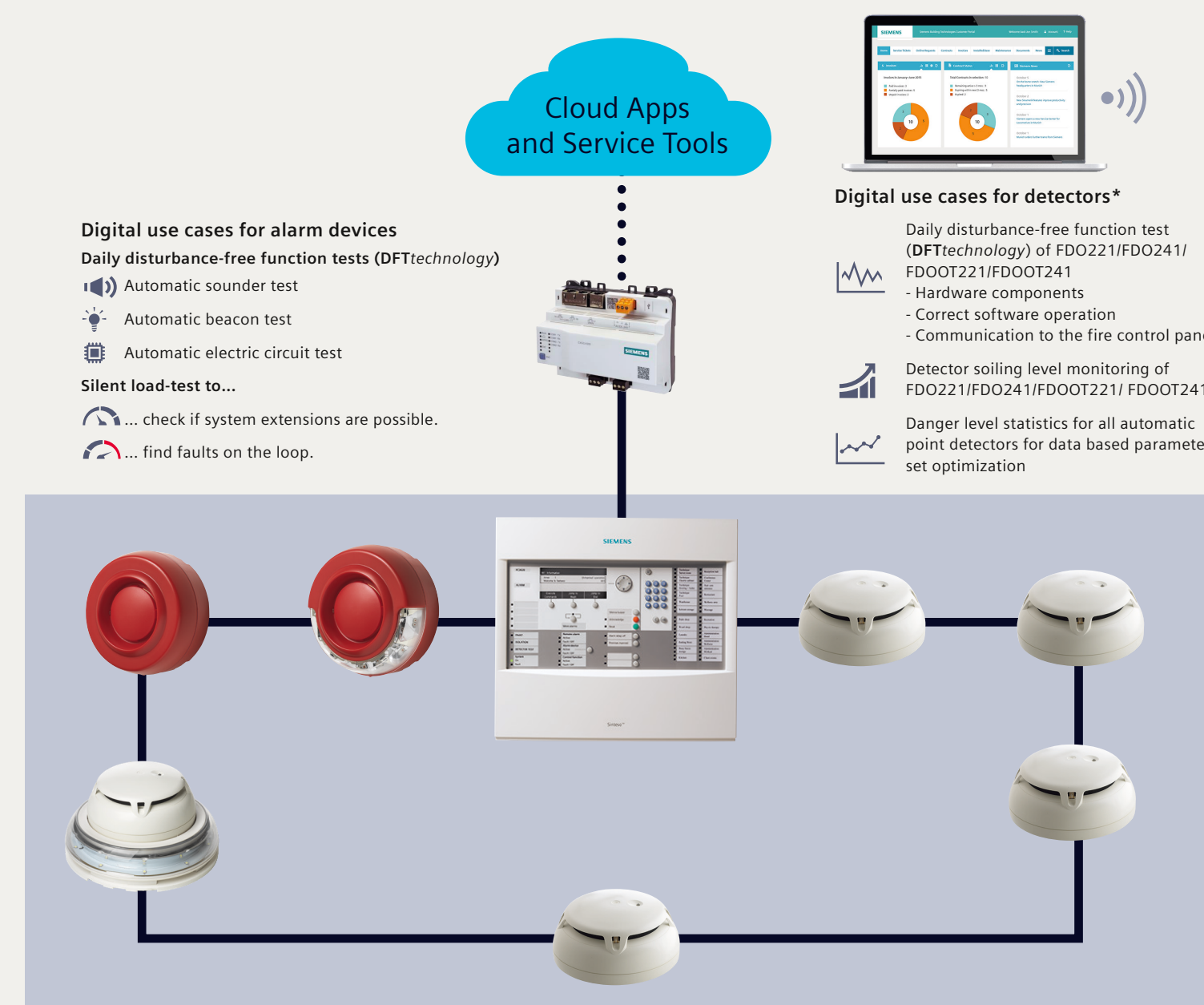
Compatibility overview

Detectors, alarm equipment, accessories				Detector bases, base adapters, alarm devices													
	FDB221	FDB222	FDB221-AA	FDB201	FDB202	FDB201-AA	FDB241	FDB251	FDB271	FDB281	FDB299	FDSB291	FDSB292	FDSB226-WX	FDSB227-WX	FDB226-X	FDB227-X
Detectors¹⁾	Detector base with stand-offs	Detector base flat	Detector base with stand-offs and micro terminal	Detector base with stand-offs, collective	Detector base flat, collective	Detector base with stand-offs, collective, with micro terminal	Base adapter for AlgoRex AnalogPLUS and SIGMALOOP	Base adapter for AlgoRex Interactive	Base radio detector	Base adapter for MS8	Base adapter for MS9	Sounder base	Sounder base, collective	Sounder beacon base	Voice sounder beacon base	Base (wall mounting)	Base deep (wall mounting)
FDT221/241	Heat detector/ASA – Heat detector	✓	✓	✓	–	–	–	–	–	–	–	✓	–	✓	✓	–	–
FDO221/241	Wide-spectrum smoke detector/ASA – Wide-spectrum smoke detector	✓	✓	–	–	–	–	–	–	–	–	✓	–	✓	✓	–	–
FDOOT221	Neural fire detector	✓	✓	–	–	–	–	–	–	–	–	–	–	✓	✓	–	–
FDOOT241-A	ASA – Neural fire detector	✓	✓	–	–	–	–	–	–	–	–	✓	–	✓	✓	–	–
FDOOT241-A3	ASA – Neural fire detector, used as AlgoRex AnalogPLUS detector or as Sintesio detector	✓	✓	–	–	–	✓	–	–	–	–	✓	–	✓	✓	–	–
FDOOT241-A4	ASA – Neural fire detector, used as SIGMALOOP detector or as Sintesio detector	✓	✓	✓	–	–	✓	–	–	–	–	✓	–	✓	✓	–	–
FDOOT241-A5	ASA – Neural fire detector, used as AlgoRex Interactive detector or as Sintesio detector	✓	✓	✓	–	–	–	✓	–	–	–	✓	–	✓	✓	–	–
FDOOT241-A9	ASA – Neural fire detector, used as collective detector or as Sintesio detector on the FDnet	✓	✓	–	✓	–	–	–	–	–	–	✓	✓	✓	✓	–	–
FDOOT241-8	ASA – Neural fire detector, used in the MS8 detector system or as Sintesio detector on the FDnet	✓	✓	–	–	–	–	–	–	–	–	✓	–	✓	✓	–	–
FDOOT241	ASA – Neural fire detector with CO sensor	✓	✓	–	–	–	–	–	–	–	–	✓	–	✓	✓	–	–
FDOOT271	ASA – Neural radio fire detector	–	–	–	–	–	–	–	✓	–	–	–	–	–	–	–	–
Alarm devices																	
FDS224-X	Sounder	–	–	–	–	–	–	–	–	–	–	–	–	–	–	✓	✓
FDS225-X	Voice sounder	–	–	–	–	–	–	–	–	–	–	–	–	–	–	✓	✓
FDS226-XX	Sounder beacon	–	–	–	–	–	–	–	–	–	–	–	–	–	–	✓	✓
FDS227-XX	Voice sounder beacon	–	–	–	–	–	–	–	–	–	–	–	–	–	–	✓	✓
Accessories																	
FDBZ293	Detector locking device against theft	✓	✓	✓	✓	✓	–	–	–	–	–	✓	–	✓	✓	✓	✓
DBZ1190-AA	Micro terminals, for wire strengths of 0.28 mm² to 0.5 mm²	–	–	–	✓	✓	–	–	–	–	–	–	–	✓	✓	✓	✓
DBZ1190-AB	Connection terminals, for wire strengths of 1.0 mm² to 2.5 mm²	–	–	–	✓	✓	–	–	–	–	–	–	–	✓	✓	✓	✓
FDBZ291 ²⁾	Designation plate	✓	✓	✓	✓	✓	–	–	–	–	–	–	–	✓	✓	✓	✓
FDBZ295 ³⁾	Sealing element	✓	–	✓	–	–	–	–	–	–	–	–	–	–	–	–	–
FDBZ297 ³⁾	Detector base seal	–	–	–	–	–	–	–	–	–	–	–	–	–	–	–	–
FDB295 ³⁾	Base attachment wet	–	–	–	✓	✓	–	–	–	–	–	–	–	–	–	–	–
FDB293 ³⁾	Base attachment humid	✓	✓	✓	✓	✓	–	–	–	–	–	–	–	–	–	–	–
FDB291 ⁴⁾	Base attachment for the supply of surface-mounted cables	✓	✓	✓	✓	✓	–	–	–	–	–	–	–	–	–	–	–
FDB228	Base (ceiling mounting)	–	–	–	–	–	–	–	–	–	–	–	–	✓	✓	–	–
FDB229	Base deep (ceiling mounting)	–	–	–	–	–	–	–	–	–	–	–	–	✓	✓	–	–
FDB2221	Ring attachment	–	–	–	–	–	–	–	–	–	–	–	–	✓	✓	–	–
FDBZ298	Blanking plate	–	–	–	–	–	–	–	–	–	–	–	–	✓	✓	–	–

¹⁾ Optional: Detector dust cap FDB2291 for protection during construction work. ²⁾ Designation plate FDBZ291 and sealing element FDBZ295/297 cannot be used together.
³⁾ Optional: Protective cage DBZ1194 to protect the detector from damage; EMC protective cage FDBZ294; detector heating FDBH291; designation plate DBZ1193A.
⁴⁾ Optional: Designation plate FDBZ291

Detectors and alarm devices with digital features

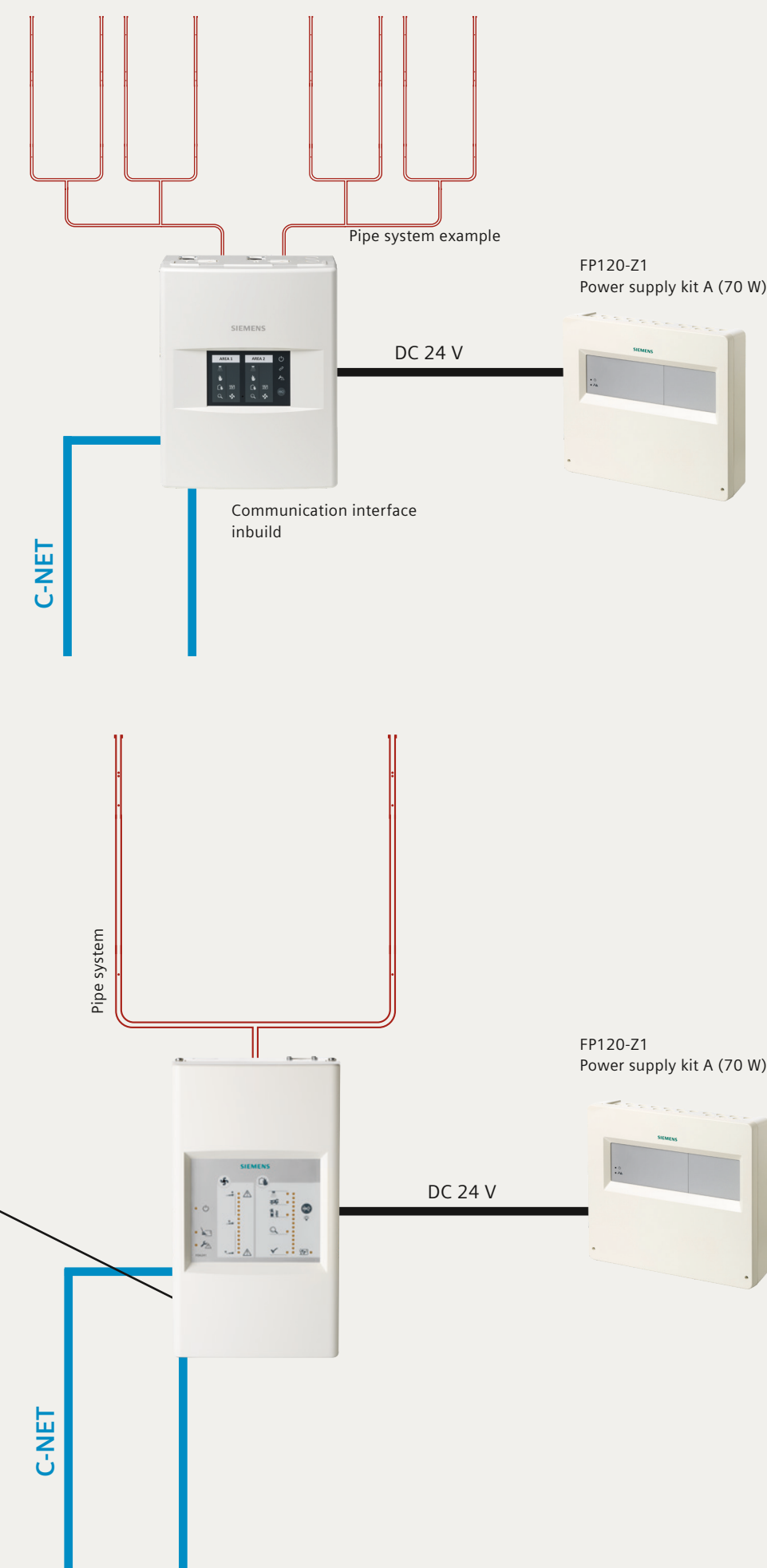
Remotely monitor your fire systems with Cloud Applications and Service Tools. Our alarm devices and detectors conduct 24/7 disturbance-free function tests (**DFTtechnology**) without disturbing building occupants and without compromising the uptime of the system. Additionally, detector soiling level and danger level statistics are extracted to enable smart decision making by condition-based detector lifetime and recommend actions to optimize your system.



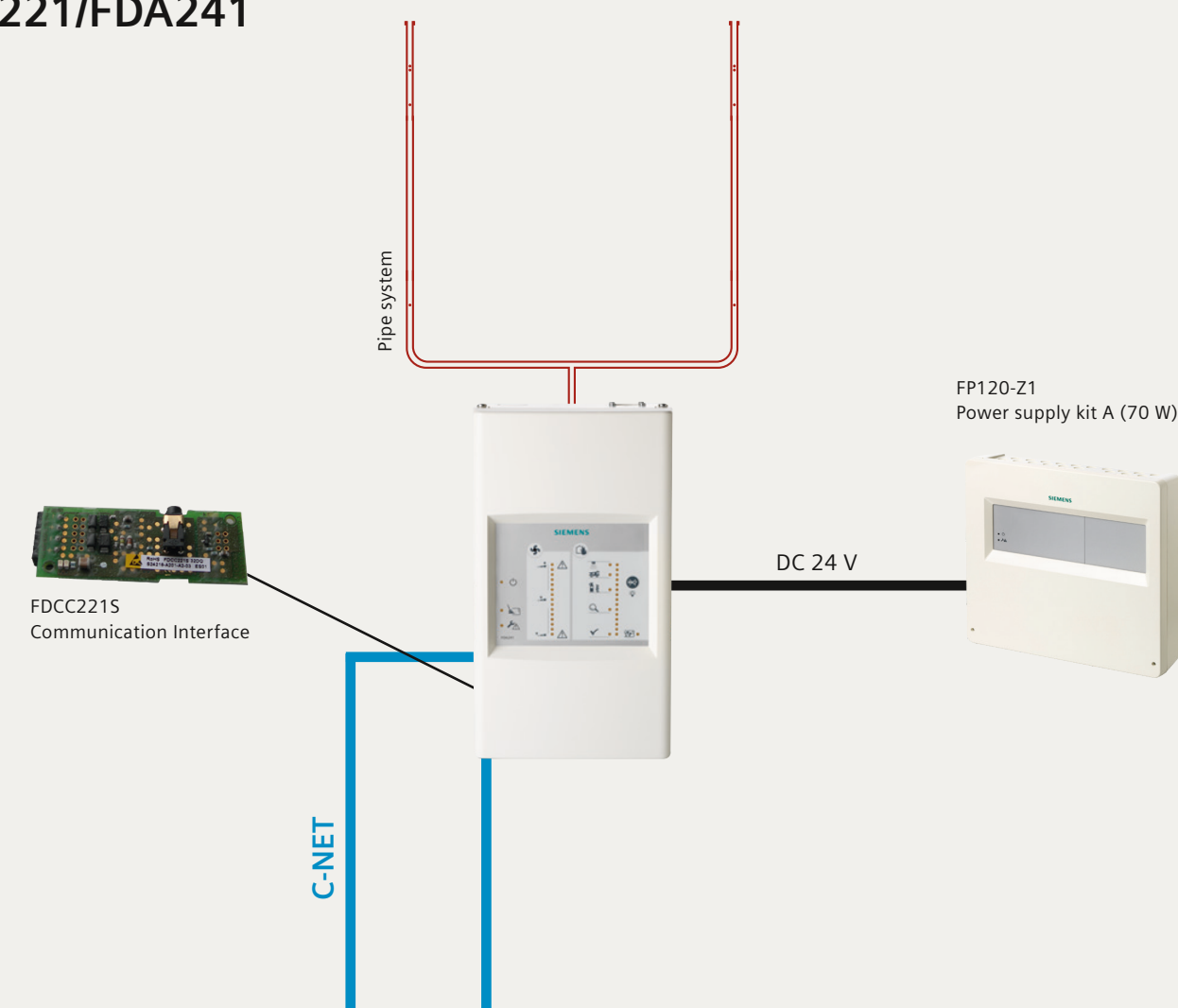
* check availability with your local Siemens representative

Aspirating Smoke Detection

FDA261/262



FDA221/FDA241



Highlights for alarming

In the event of a fire it is essential to alert and evacuate people as fast as possible. A wide product portfolio range offers alarm devices for acoustic and optical alarming. All devices are loop powered and constantly monitored.

Sounder

The sounder creates an acoustic alarm signal in case of an event. All devices offers a broad range of tone patterns. The acoustic perception is outstanding because all tones are synchronized.

- Certified for acoustic alarming according EN 54-3
- 3 different sound levels are selectable (minimum / medium / maximum)
- 16 integrated tone patterns

Voice

The devices with voice messages are able to play a precise voice instruction for different events in the building. With help of a voice message, the evacuation process is faster and the building occupants receive clear instructions.

- Certified for acoustic alarming according EN 54-3.
- A voice message can be emitted in one or two languages with an attention tone:

Languages (15 integrated, 2 customizable)

- English
- German
- French
- Italian
- Spanish
- Turkish
- English UK
- Dutch
- Sweden
- Norwegian
- Finnish
- Danish
- Polish
- Portuguese
- Russian
- Custom language 1
- Custom language 2

Message categories (5 predefined, 2 customizable)

- EVAC FIRE
- EVAC EMERGENCY
- ALERT
- TEST
- ALL-CLEAR
- Custom message 1
- Custom message 2

CUSTOMER-SPECIFIC VOICE MESSAGE

1. ORDER THE SERVICE "CONVERSION OF VOICE MESSAGE FDS227" TO CREATE A CUSTOMER-SPECIFIC AUDIO LIBRARY
2. ORDER CUSTOMER-SPECIFIC DEVICES (L-C) WITH CUSTOM AUDIO LIBRARY ID

Example for Voice messages in English

- EVAC FIRE: Attention please, this is a fire alarm! Please leave the building immediately by the marked available exits.
- EVAC EMERGENCY: Attention please, this is an emergency. Please leave the building by the marked available exits.
- ALERT: Attention, an incident has been reported in the building, please await further instructions.
- TEST: This is a test message, no action is required.
- ALL-CLEAR: Attention please! All clear! The building alert has been resolved. All clear!

Beacon

Addressing two senses – an optical and an acoustical signal – speeds up the alert and evacuation process. We increase the awareness of the optical signal with a high flash intensity and a very short pulse length. The device has multiple options for brightness which can be adjusted according to the room size.

- Certified for optical alarming according EN 54-23
- Additional light intensity setting (supplementary optical indication) designed for system extensions or migration.

Wall devices

Ceiling devices

Category: Wall mounting

- White LED: High: W-3.2-10, Mid: W-2.4-7.5, Low: O-2.6-2
- Red LED: High: W-2.8-8.8, Mid: W-2.4-7.5, Low: O-2.6-2

Category: Ceiling mounting

- White LED: High: C-4-15, Mid: C-3-12, Low: O-2.5-6.5
- Red LED: High: C-4-15, Mid: C-3-10, Low: O-2.5-6.5

O = Open category: Wall mounted, cubic coverage as category W
O = Open category: Ceiling mounted, cylindrical coverage as category C

